



MESSAGE FROM
DIANE DALEY, CEO

Warm winter greetings to you!

As the Canada-Wide Early Learning and Child Care (CWELCC) plan rolls out across the province of Ontario, families with children under 6 will finally have access to affordable childcare fees. This is a good news story for all families. Historically, child care fees have not been affordable for many families. The lack of accessible licensed child care resulted in many families being forced to stay home, or make informal child care arrangements outside of the licensed system that is regulated by the Child Care and Early Years Act.

For over 170 years, Family Day Services has been invested in the wellbeing of families and communities, continually evolving and in response to their changing needs. Today, Family Day offers a range of programs and services for families to participate in high quality licensed early learning.

This month we are shining the spotlight on the many benefits of choosing licensed child care. Licensed facilities adhere to ongoing rigorous regulations through the Ministry of Education's licensing system. Under the licensing system

Family Day must meet standards for safety, cleanliness, nutrition, and staff qualification and training. These criteria all play an important role in providing your child with a safe and enriching learning environment.

We hope that all eligible families across the province take advantage of the Canada Wide plan and its reduction to base fees. Family Day will be communicating more about the plan over the next five years. By now many families have already started to see their fees being reduced. Please speak to your Centre Supervisor or your Home Child Care provider for more information. You can also check out Family Day's website for the most up to date information <https://familydaycare.com/canada-wide-early-learning-and-child-care-plan/>

I hope that the past few weeks your holiday season has been filled with many happy memories and an opportunity to spend time with the special people in your lives. Wishing everyone a wonderful 2023.





Apple Chips with Cinnamon

Easy, 2-ingredient cinnamon-covered apple chips both look and taste great!

Prep Time

5 minutes

Cook Time

1 hour

Total Time

1 hr 5 mins

Ingredients (per person / serving)

1 Fresh Apple

1 tbsp Cinnamon

Instructions

Heat oven to 150°C or 300°F

Core and then slice apples finely using sharp knife or mandoline slicer

Place sliced apples on a cookie pan covered with non-stick parchment paper or aluminum foil.

Sprinkle with cinnamon.

Bake for 50 – 60 minutes until apples crisps are dry and curly, turning once half way through cooking.

Source: https://www.cleaneatingwithkids.com/wprm_print/6449



**Kids can discover the wonder of
winter right outside their door**

BE SURE TO PRINT THE **WINTER**
SCAVENGER HUNT ON THE NEXT PAGE



Snowy tree branch

- ☐ I saw it ☐ I touched it
☐ I heard it move in the wind



Tracks in snow or mud

- ☐ I saw them
☐ I touched them



Pine cone

- ☐ I saw it ☐ I smelled it
☐ I touched it



Birds flying

- ☐ I saw them
☐ I heard them

 **FAMILY DAY**

WINTER SCAVENGER HUNT



*A 'sense'-sational way for
children to experience the
great outdoors*



Falling snow

- ☐ I saw it ☐ I tasted it
☐ I touched it



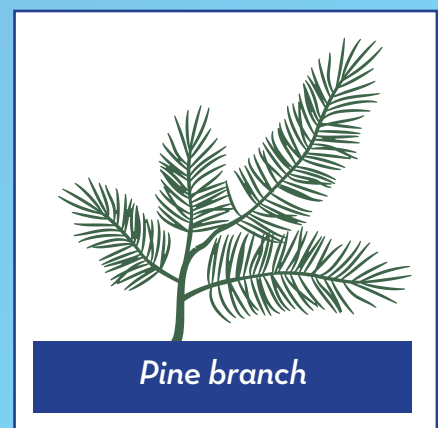
A snowman

- ☐ I saw it
☐ I touched it



The cold wind

- ☐ I felt it ☐ I smelled it
☐ I saw it



Pine branch

- ☐ I saw it ☐ I smelled it
☐ I touched it



Licensed Child Care: *Accessible, Affordable, Flexible and Personalized*

When you choose licensed child care, you're also choosing peace of mind



When it comes to your child, you want the best—especially when you can't be with them. There are so many factors to consider when it comes to child care: location, cost, environment, quality of care and your child's own specific needs.

There are three different models of licensed child care in Ontario:

- Home Child Care
- Child Care Centres
- Before and After School programs

All Family Day child care facilities are licensed; and registered under the CWELCC plan for more affordable child care for children under 6.

In Ontario, there are two types of child care: licensed and unlicensed. Licensed child care is government regulated and inspected. Unlicensed child care providers are not inspected nor are they required to meet most provincial standards. The Ministry will investigate complaints against unlicensed child care operators, but if there are no complaints, any issues might not be apparent.

Child care licensing regulations help to foster an environment that promotes healthy child development for children from birth to 12 years. Regulating around key issues such as health and

All licensed child care centres and home child care providers are overseen by a licensed agency and display an official decal on their premises. If you don't see a decal, the provider is unlicensed.

safety, and also staff training, ongoing staff education to better meet the needs of our developing communities, and program management to ensure inclusive and enriching educational opportunities for every child.

Licensed home child care providers (contracted and overseen by home child care agencies licensed by the Ministry of Education) may care for infants, toddlers, preschool and/or school-aged children. They may offer full-day care, before-and-after-school care, extended hours or even overnight care.

Home child care providers are pre-screened, regularly monitored and receive support in health and safety, quality age-appropriate programming, nutrition and meal planning.

Both announced and unannounced monthly home visits ensure all required policies and procedures are in place. Additionally, the Ministry of Education conducts annual inspections of agencies and select home child care locations during the licensing process, to confirm that all

government standards and regulations are followed.

Licensed child care centres also care for children from infant to school-aged. They may include nurseries, full-day care, extended hours/overnight care or before-and-after-school programs. They operate in various locations including workplaces, community centres, schools and places of worship.

All licensed child care centres and home child care providers are overseen by a licensed agency and display an official decal on their premises. If you don't see a decal, the provider is unlicensed.

Background checks are conducted for all staff at licensed child care centres, and all Home Child Care providers and their families, to ensure that no one on the premises has a criminal record.

All of these factors can give you peace of mind and rest assured that your child's education, welfare and health are in good hands.

The Benefits of Licensed Home Child Care

- 1 Government-regulated, inspected homes that meet specific standards
- 2 Scheduled and unscheduled visits to the care givers home.
- 3 Annual inspections of select home child care locations by the Ministry of Education
- 4 Siblings can be placed together
- 5 Small adult-to-child ratios: children receive more one-on-one interaction
- 6 Professional development, support and monitoring for home child care providers
- 7 Home visitors (employed by licensed agencies) screen, inspect and monitor and inspect home providers with respect to specific health, safety and developmental standards.
- 8 Flexible schedules for parents working long hours, late shifts, evenings and weekends.



The Benefits of Licensed Child Care Centres

- 1 Government-regulated and inspected annually by the Ministry of Education
- 2 Children learn with other children their age
- 3 Staff members must meet Child Care and Early Years Act 2014 qualification requirements
- 4 Centres must meet established standards of care
- 5 Centres must offer all children age/development-appropriate activities



When you choose licensed child care you are also choosing:

- ✓ Play-based learning programs
- ✓ Early Years “How Does Learning Happen” Pedagogy
- ✓ Individualized support and resources

Family Day embraces social inclusion and recognizes that every family and child is unique. Our Family Centered Practices Policy promotes family engagement and supports families being involved and sharing their perspectives so your child care is reflective and representative of

your culture and values as well. We also recognize and respect that you are your children’s most important caregiver.

Working in collaboration with parents, guardians, caregivers, government and community partners, the health, safety

and well-being of your children is our utmost priority.

Family Day services the Greater Toronto, York and Peel regions. Call us: 416-922-3434 or toll-free, 1-800-263-9703 or please email: childcareservices@familydaycare.com

Please visit our website to learn more about how you can benefit from licensed child care in general and the **Canada-Wide Early Learning and Child Care Plan** in particular



**FAMILY
DAY**



United Way
Greater Toronto

Family Day Care Services

155 Gordon Baker Road, Suite 400
Toronto, Ontario M2H 3N5
416 922-9556
familydaycare.com



[facebook.com/FamilyDayCareServices](https://www.facebook.com/FamilyDayCareServices)



[@FamilyDayGTA](https://twitter.com/FamilyDayGTA)

Our Programs

- Licensed Home Child Care
- Child Care Centres
- School Age Programs
- Resource Programs
- EarlyON Child and Family Centres
- Homework Plus

FOCUS Newsletter

Writing and Design:
WISHART.NET

For countless families, Family Day is the only way!



FAMILY
DAY



OPEN DOORS
FAMILY DAY OUTDOOR
LEARNING ADVENTURES

TIPS FOR DRESSING IN WINTER MONTHS



Cool Weather (Late fall / Early spring)



Base Layer: Long sleeve shirt and pant layer made of synthetic fabric (*not cotton, which absorbs sweat and can make you cold*)



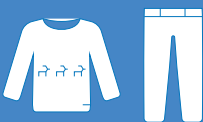
Outer Layer: Lined, wind-resistant, waterproof jacket and snow/splash pants

Warm, waterproof boots or rain boots

Cold Weather (Early winter / Late winter)



Base Layer: Long sleeve top and long johns bottom made of synthetic, wool or silk fabric (*not cotton*) and non-cotton socks (*wool is best*)

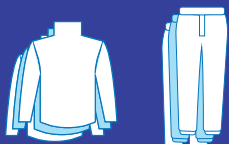


Insulating Layer: Sweatshirt and sweatpants, or fleece jacket/pullover and fleece pants



Outer Layer: water-resistant snow suit, non-cotton hat/toque, tube neck warmer and water-resistant mittens

Warm, waterproof boots



Extreme Cold Weather (Mid-winter)

Follow the 'Cold Weather' tips but add one or two additional layers on top and bottom